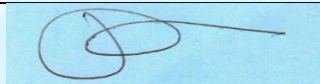


Forest Way School

Complaints Policy – Parents and Carers

Name: GAIL SEATON

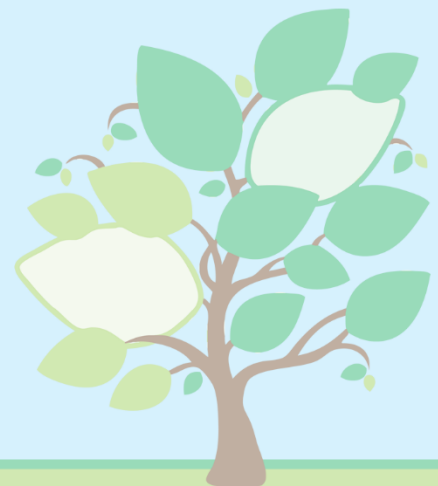
Signature:



Title: HEAD

Date: MAY 2024

Next Review Date: MAY 2025



Statutory

Non-Statutory

Who can make a complaint?

This complaints procedure is not limited to parents or carers of children that are registered at the school. Any person, including members of the public, may make a complaint to Forest Way School about any provision of facilities or services that we provide. Unless complaints are dealt with under separate statutory procedures (such as appeals relating to exclusions or admissions), we will use this complaints procedure.

The difference between a concern and a complaint

A concern may be defined as *'an expression of worry or doubt over an issue considered to be important for which reassurances are sought'*.

A complaint may be defined as *'an expression of dissatisfaction however made, about actions taken or a lack of action'*.

It is in everyone's interest that concerns and complaints are resolved at the earliest possible stage. Many issues can be resolved informally, without the need to use the formal stages of the complaints procedure. Forest Way School takes concerns seriously and will make every effort to resolve the matter as quickly as possible.

If you have difficulty discussing a concern with a particular member of staff, we will respect your views. In these cases, the Headteacher will refer you to another staff member. Similarly, if the member of staff directly involved feels unable to deal with a concern, they will refer you to another staff member. The member of staff may be more senior but does not have to be. The ability to consider the concern objectively and impartially is more important.

We understand however, that there are occasions when people would like to raise their concerns formally. In this case, Forest Way School will attempt to resolve the issue internally, through the stages outlined within this complaints procedure.

How to raise a concern or make a complaint

A concern or complaint can be made in person, in writing or by telephone. They may also be made by a third party acting on behalf on a complainant, as long as they have appropriate consent to do so.

Complaints against school staff (except the head teacher) should be made in the first instance, to the head teacher) via the school office. Please mark them as Private and Confidential.

Complaints that involve or are about the head teacher should be addressed to the Chair of Trustees, via the school office. Please mark them as Private and Confidential.

Complaints about the Chair of Trustees, any individual governor or the whole governing body should be addressed to Clerk to the Trustees via the school office. Please mark them as Private and Confidential.

For ease of use, a template complaint form is included at the end of this procedure. If you require help in completing the form, please contact the school office. You can also ask a third-party organisation for example like the Citizens Advice to help you.

In accordance with equality law, we will consider making reasonable adjustments if required, to enable complainants to access and complete this complaints procedure. For instance, providing information in alternative formats, assisting complainants in raising a formal complaint or holding meetings in accessible locations.

Anonymous complaints

We will not normally investigate anonymous complaints. However, the head teacher or Chair of Governors, if appropriate, will determine whether the complaint warrants an investigation.

Time scales

You must raise the complaint within three months of the incident or, where a series of associated incidents have occurred, within three months of the last of these incidents. We will consider complaints made outside of this time frame if exceptional circumstances apply.

Complaints received outside of term time

We will consider complaints made outside of term time to have been received on the first school day after the holiday period.

Scope of this complaints procedure

This procedure covers all complaints about any provision of community facilities or services by <Academy Name>, other than complaints that are dealt with under other statutory procedures, including those listed below.

Exceptions	Who to contact
<ul style="list-style-type: none">Admissions to schools	Concerns about admissions should be handled through a separate process – either through the appeals process or via the local authority.
<ul style="list-style-type: none">Matters likely to require a Child Protection Investigation	Complaints about child protection matters are handled under our child protection and safeguarding policy and in accordance with relevant statutory guidance. If you have serious concerns, you may wish to contact the local authority designated officer (LADO) who has local responsibility for safeguarding.
<ul style="list-style-type: none">Exclusion of children from school*	Further information about raising concerns about exclusion can be found at: www.gov.uk/school-discipline-exclusions/exclusions .
<ul style="list-style-type: none">Whistleblowing	We have an internal whistleblowing procedure for all our employees, including temporary staff and contractors. The Secretary of State for Education is the prescribed person for matters relating to education for whistle-blowers in education who do not want to raise matters direct with their employer. Referrals can be made at: www.education.gov.uk/contactus . Volunteer staff who have concerns about our school should complain through the school's complaints procedure.
<ul style="list-style-type: none">Staff grievances	Complaints from staff will be dealt with under the school's internal grievance procedures.
<ul style="list-style-type: none">Staff conduct	Complaints about staff will be dealt with under the school's internal disciplinary procedures, if appropriate. Complainants will not be informed of any disciplinary action taken against a staff member as a result of a complaint. However, the complainant will be notified that the matter is being addressed.

If other bodies are investigating aspects of the complaint, for example the police, local authority (LA) safeguarding teams or Tribunals, this may impact on our ability to adhere to the timescales within this procedure or result in the procedure being suspended until those public bodies have completed their investigations. If this happens, we will inform you of a proposed new timescale.

If a complainant commences legal action against Forest Way School in relation to their complaint, we will consider whether to suspend the complaints procedure until those legal proceedings have concluded.

Resolving complaints

At each stage in the procedure, Forest Way School wants to resolve the complaint. If appropriate, we will acknowledge that the complaint is upheld in whole or in part. In addition, we may offer one or more of the following:

- an explanation
- an admission that the situation could have been handled differently or better
- an assurance that we will try to ensure the event complained of will not recur
- an explanation of the steps that have been or will be taken to help ensure that it will not happen again and an indication of the timescales within which any changes will be made
- an undertaking to review school policies in light of the complaint
- an apology.

Withdrawal of a complaint

If a complainant wants to withdraw their complaint, we will ask them to confirm this in writing.

Stage 1 – Informal complaints

It is to be hoped that most concerns can be expressed and resolved on an informal basis. Concerns should be raised with either the class teacher or head teacher. This can be done in writing, by telephone, or in person by appointment. It would be helpful to identify at this point what outcome you are looking for in order for us to address your concern quickly and effectively. Complainants should not approach individual governors to raise concerns or complaints. They have no power to act on an individual basis and it may also prevent them from considering complaints at Stage 3 of the procedure.

If the issue remains unresolved, the next step is to make a formal complaint.

Stage 2 – Formal complaints to the Headteacher

If your concern is not resolved at the informal stage you can make a formal complaint to the Headteacher within 10 school days of stage 1 being concluded. Your complaint should usually be made in writing indicating your desired outcome from the complaint (a form is enclosed for this purpose).

Formal complaints must be made to the Headteacher (unless they are about the head teacher), via the school office. This may be done in person or in writing (preferably on the Complaint Form).

The head teacher will record the date the complaint is received and will acknowledge receipt of the complaint in writing (either by letter or email) within 5 school days, and will include an indicative date for a written response. The head teacher can consider whether a face to face meeting is the most appropriate way of doing this.

Note: The head teacher may delegate the investigation to another member of the school's senior leadership team but not the decision to be taken.

During the investigation, the head teacher (or investigator) will:

- if necessary, interview those involved in the matter and/or those complained of, allowing them to be accompanied if they wish
- keep a written record of any meetings/interviews in relation to their investigation.

At the conclusion of their investigation, the head teacher will provide a formal written response.

If the head teacher is unable to meet this deadline, they will provide the complainant with an update and revised response date.

The response will detail any actions taken to investigate the complaint and provide a full explanation of the decision made and the reason(s) for it. Where appropriate, it will include details of actions Forest Way School will take to resolve the complaint.

The head teacher will advise the complainant of how to escalate their complaint should they remain dissatisfied with the outcome of Stage 2.

If the complaint is about the head teacher, or a member of the governing body (including the Chair or Vice-Chair), a suitably skilled governor will be appointed to complete all the actions at Stage 3.

Complaints about the head teacher or member of the governing body must be made to the Clerk, via the school office.

If the complaint is:

- jointly about the Chair and Vice Chair or
- the entire governing body or
- the majority of the governing body

Stage 3: Formal complaint to the Chair of Trustees

If you are dissatisfied with the Headteacher's response or your complaint concerns the conduct of the Headteacher then you can make a formal complaint to the Chair of Trustees.

Your complaint should be made in writing to the Chair of Trustees, care of the school, within 10 school days of the date of the Headteacher's response to you. Please provide a copy of the written complaint, a copy of the Headteacher's letter concluding Stage 2 and give details in writing of why they are not satisfied with the outcome.

At this stage the Chair of Trustees will generally handle the complaint but can delegate this to a nominated trustee. In exceptional circumstances, the Chair of Trustees may commission an independent investigator to undertake an investigation on behalf of the school. In the event of this, your consent will be required to share information with the external investigator. You will receive an acknowledgment of receipt of your complaint within 5 school days and an indicative timescale for response.

The trustee will investigate the complaint and make every effort to resolve the issue. They may meet with you if they need clarification or further information is necessary.

On conclusion of the investigation you will receive a written response of the outcome reached and the process for appeal.

Stage 4 – Formal complaint appeal panel

If the complainant is dissatisfied with the outcome at Stage 3 and wishes to take the matter further, they can escalate the complaint to Stage 4 – The panel will usually consist of 3 trustees from the school plus one member who is independent of the management and running of Forest Way School. These trustees will have no previous knowledge of the complaint. If this is not possible for any reason, then alternative arrangements will be made and communicated to you.

This is the final stage of the complaints procedure.

A request to escalate to Stage 4 must be made to the Clerk, via the school office, within 10 school days of receipt of the Stage 3 response.

The Clerk will record the date the complaint is received and acknowledge receipt of the complaint in writing (either by letter or email) within 5 school days. The letter will explain the process which is to be followed and information about the how the panel will operate. The complaints appeal panel is the last school based stage of the complaints process. Individual complaints will not be heard by the whole governing board at any stage as this could compromise the impartiality of any panel set up for a disciplinary hearing against a member of staff following a serious complaint.

Requests received outside of this time frame will only be considered if exceptional circumstances apply.

If the complainant rejects the offer of three proposed dates, without good reason, the Clerk will decide when to hold the meeting. It will then proceed in the complainants absence on the basis of written submission from both parties.

If the complaint is:

- jointly about the Chair and Vice Chair or
- the entire governing body or
- the majority of the governing body

Stage 4 will be heard by a completely independent committee panel.

A complainant may bring someone along to the panel meeting to provide support. This can be a relative or friend. Generally, we do not encourage either party to bring legal representatives to the committee meeting. However, there may be occasions when legal representation is appropriate.

For instance, if a school employee is called as a witness in a complaint meeting, they may wish to be supported by union and/or legal representation.

Note: Complaints about staff conduct will not generally be handled under this complaints procedure. Complainants will be advised that any staff conduct complaints will be considered under (Human Resources) staff disciplinary procedures, if appropriate, but outcomes will not be shared with them.

Representatives from the media are not permitted to attend.

At least 10 school days before the meeting, the Clerk will:

- confirm and notify the complainant of the date, time and venue of the meeting, ensuring that, if the complainant is invited, the dates are convenient to all parties and that the venue and proceedings are accessible
- request copies of any further written material to be submitted to the committee at least 8 school days before the meeting.

Any written material will be circulated to all parties at least 5 school days before the date of the meeting. The committee will not normally accept, as evidence, recordings of conversations that were obtained covertly and without the informed consent of all parties being recorded.

The committee will also not review any new complaints at this stage or consider evidence unrelated to the initial complaint to be included. New complaints must be dealt with from Stage 1 of the procedure.

The meeting will be held in private. Electronic recordings of meetings or conversations are not normally permitted unless a complainant's own disability or special needs require it. Prior knowledge and consent of all parties attending must be sought before meetings or conversations take place. Consent will be recorded in any minutes taken.

The committee will consider the complaint and all the evidence presented. The committee can:

- uphold the complaint in whole or in part

- dismiss the complaint in whole or in part.

If the complaint is upheld in whole or in part, the committee will:

- decide on the appropriate action to be taken to resolve the complaint
- where appropriate, recommend changes to the school's systems or procedures to prevent similar issues in the future.

The Chair of the Committee will provide the complainant and Forest Way with a full explanation of their decision and the reason(s) for it, in writing, within 5 school days.

The letter to the complainant will include details of how to contact the Education and Skills Funding Agency (ESFA) if they are dissatisfied with the way their complaint has been handled by [Forest Way School](#).

The response will detail any actions taken to investigate the complaint and provide a full explanation of the decision made and the reason(s) for it. Where appropriate, it will include details of actions [Forest Way](#) will take to resolve the complaint.

The panel will ensure that those findings and recommendations are sent by electronic mail or otherwise given to the complainant and, where relevant, the person complained about. Furthermore, they will be available for inspection on the school premises by the proprietor and the head teacher.

A written record will be kept of all complaints, and of whether they are resolved at the preliminary stage or proceed to a panel hearing, along with what actions have been taken, regardless of the decision.

All correspondence, statements and records relating to individual complaints will be kept confidential except where the Secretary of State or a body conducting an inspection under section 109 of the 2008 Act requests access to them.

Next Steps

If the complainant believes the school did not handle their complaint in accordance with the published complaints procedure or they acted unlawfully or unreasonably in the exercise of their duties under education law, they can contact the ESFA after they have completed Stage 4. The ESFA will not normally reinvestigate the substance of complaints or overturn any decisions made by Forest Way. They will consider whether Forest Way has adhered to education legislation and any statutory policies connected with the complaint and whether they have followed [Part 7 of the Education \(Independent School Standards\) Regulations 2014](#).

The complainant can refer their complaint to the ESFA online at:

www.education.gov.uk/contactus, by telephone on: 0370 000 2288 or by writing to:

Academy Complaints and Customer Insight Unit

Education and Skills Funding Agency

Cheylesmore House

5 Quinton Road

Coventry

CV1 2WT

Duplicate Complaints

If we have resolved a complaint under this procedure and receive a duplicate complaint on the same subject from a partner, family member or other individual, we will assess whether there are aspects that we hadn't previously considered, or any new information we need to take into account.

If we are satisfied that there are no new aspects, we will:

Tell the new complainant that we have already investigated and responded to this issue, and the local process is complete.

Direct them to the DfE if they are dissatisfied with our original handling of the complaint

If there are new aspects, we will follow this procedure again.

UK GDPR and DPA Complaints

All Staff must be aware of the complaints process. All complaints involving GDPR should be directed to the Data Protection Compliance Manager. If any member of staff is aware that a person wishes to complain they should direct the person to the school website and complaints policy and form.

The Data Protection Compliance Manager is responsible for dealing with all complaints in line with this procedure.

The school complaints policy sets out the complaints process. This will be the basis for dealing with Data Protection Compliance Manager and appeals. A written outcome will be provided.

If the school does not comply with a Subject Access Request within 1 month (subject to any extension), or refuses all or part of the request, written reasons will be provided, setting out the principles for the refusal.

If you feel that the school have not dealt with your matter satisfactorily you can complaint to the Information Commissioner

By post:

Customer Contact

Information Commissioner's Office

Wycliffe House

Water Lane

Wilmslow

SK9 5AF

Or by email: casework@ico.org.uk

More information is on the ICO website www.ico.org.uk/

Complaint Form

Please complete and return to *Head teacher* who will acknowledge receipt and explain what action will be taken.

Your name:
Pupil's name (if relevant):
Your relationship to the pupil (if relevant):
Address: Postcode: Day time telephone number: Evening telephone number: Email address:
Please give details of your complaint, including whether you have spoken to anybody at the school about it.

What actions do you feel might resolve the problem at this stage?

Are you attaching any paperwork? If so, please give details.

Signature:

Date:

Official use

Date acknowledgement sent:

By who:

Complaint referred to:

Action taken:

Date:

Roles and Responsibilities

Complainant

The complainant will receive a more effective response to the complaint if they:

- explain the complaint in full as early as possible
- co-operate with the school in seeking a solution to the complaint
- respond promptly to requests for information or meetings or in agreeing the details of the complaint
- ask for assistance as needed
- treat all those involved in the complaint with respect
- refrain from publicising the details of their complaint on social media and respect confidentiality.

Investigator

The investigator's role is to establish the facts relevant to the complaint by:

- providing a comprehensive, open, transparent and fair consideration of the complaint through:
 - sensitive and thorough interviewing of the complainant to establish what has happened and who has been involved
 - interviewing staff and children/young people and other people relevant to the complaint
 - consideration of records and other relevant information
 - analysing information
- liaising with the complainant and the complaints co-ordinator as appropriate to clarify what the complainant feels would put things right.

The investigator should:

- conduct interviews with an open mind and be prepared to persist in the questioning
- keep notes of interviews or arrange for an independent note taker to record minutes of the meeting
- ensure that any papers produced during the investigation are kept securely pending any appeal
- be mindful of the timescales to respond
- prepare a comprehensive report for the head teacher or complaints committee that sets out the facts, identifies solutions and recommends courses of action to resolve problems.
- The head teacher or complaints committee will then determine whether to uphold or dismiss the complaint and communicate that decision to the complainant, providing the appropriate escalation details.

Complaints Co-ordinator

(this could be the head teacher / designated complaints governor or other staff member providing administrative support)

The complaints co-ordinator should:

- ensure that the complainant is fully updated at each stage of the procedure
- liaise with staff members, head teacher, Chair of Governors or the Clerk and to ensure the smooth running of the complaints procedure

- be aware of issues regarding:
 - sharing third party information
 - additional support. This may be needed by complainants when making a complaint including interpretation support or where the complainant is a child or young person
- keep records.

Clerk to the Governing Body / Trust Board

The Clerk is the contact point for the complainant and the committee and should:

- ensure that all people involved in the complaint procedure are aware of their legal rights and duties, including any under legislation relating to school complaints, education law, the Equality Act 2010, the Freedom of Information Act 2000, the Data Protection Act (DPA) 2018 and the General Data Protection Regulations (GDPR)
- set the date, time and venue of the meeting, ensuring that the dates are convenient to all parties (if they are invited to attend) and that the venue and proceedings are accessible
- collate any written material relevant to the complaint (for example: stage 1 paperwork, school and complainant submissions) and send it to the parties in advance of the meeting within an agreed timescale
- record the proceedings
- circulate the minutes of the meeting
- notify all parties of the committee's decision.

Committee Chair

The committee's chair, who is nominated in advance of the complaint meeting, should ensure that:

- both parties are asked (via the Clerk) to provide any additional information relating to the complaint by a specified date in advance of the meeting
- the meeting is conducted in an informal manner, is not adversarial, and that, if all parties are invited to attend, everyone is treated with respect and courtesy
- complainants who may not be used to speaking at such a meeting are put at ease. This is particularly important if the complainant is a child/young person
- the remit of the committee is explained to the complainant
- written material is seen by everyone in attendance, provided it does not breach confidentiality or any individual's rights to privacy under the DPA 2018 or GDPR.

If a new issue arises it would be useful to give everyone the opportunity to consider and comment upon it; this may require a short adjournment of the meeting

- both the complainant and the school are given the opportunity to make their case and seek clarity, either through written submissions ahead of the meeting or verbally in the meeting itself
- the issues are addressed
- key findings of fact are made
- the committee is open-minded and acts independently
- no member of the committee has an external interest in the outcome of the proceedings or

any involvement in an earlier stage of the procedure

- the meeting is minuted
- they liaise with the Clerk (and complaints co-ordinator, if the school has one).

Committee Member

Committee members should be aware that:

- the meeting must be independent and impartial, and should be seen to be so
No governor may sit on the committee if they have had a prior involvement in the complaint or in the circumstances surrounding it.
- the aim of the meeting should be to resolve the complaint and achieve reconciliation between the school and the complainant

We recognise that the complainant might not be satisfied with the outcome if the meeting does not find in their favour. It may only be possible to establish the facts and make recommendations.

- many complainants will feel nervous and inhibited in a formal setting
Parents/carers often feel emotional when discussing an issue that affects their child.
- extra care needs to be taken when the complainant is a child/young person and present during all or part of the meeting

Careful consideration of the atmosphere and proceedings should ensure that the child/young person does not feel intimidated.

The committee should respect the views of the child/young person and give them equal consideration to those of adults.

If the child/young person is the complainant, the committee should ask in advance if any support is needed to help them present their complaint. Where the child/young person's parent is the complainant, the committee should give the parent the opportunity to say which parts of the meeting, if any, the child/young person needs to attend.

However, the parent should be advised that agreement might not always be possible if the parent wishes the child/young person to attend a part of the meeting that the committee considers is not in the child/young person's best interests.

- the welfare of the child/young person is paramount.

